

### Injection Moulded Brine tanks (IM)

Article number	Vol.	A	B	C	D	E
0801.BT100WI	100 L	440	467	100	630	50
0801.BT150WI	150 L	500	530	100	750	50
0801.BT200WI	200 L	490	530	100	1000	50

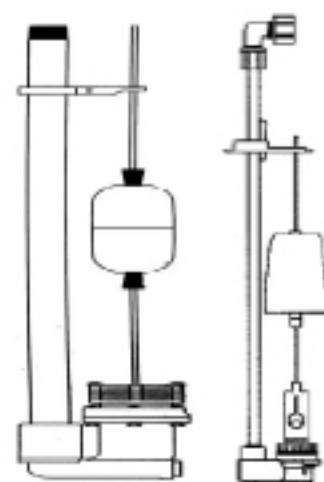
dimensions in mm



### Rotomoulded Brine tanks (RM)

Article number	Vol.	A	B	O	D	E
0801.BT0040	40 L	300	520	360	570	3,5
0801.BT0080	80 L	410	650	470	670	4,5
0801.BT0110	110L	420	760	450	780	4,5
0801.BT0200	200L	570	800	600	830	5,5
0801.BT0300	300L	660	910	700	950	5,5
0801.BT0400	400L	780	860	840	900	6,0
0801.BT0500	500L	780	1060	880	1100	6,0
08.01.BT0750	750L	900	1200	960	1250	7,0
08.01.BT1000	1000 L	1000	1280	1050	1330	8,0
08.01.BT1500	1510 L	1370	1000	1430	1050	8,0

dimensions in mm



454 HF

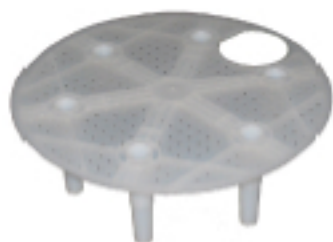
464

50°C	50°C
8 bar	8 bar
38 L / min.	3,8 L / min.
38 L / min.	1,3 L / min.



Rotomoulded tanks are also available in **BLACK** colour at the same prices

Rotomoulded tanks are also available in **BLUE** colour – Prices on request !!



Salt grid for brine tanks  
100 L, 150 L and 200 L



Salt grid for brine tanks  
200 L to 1500 L